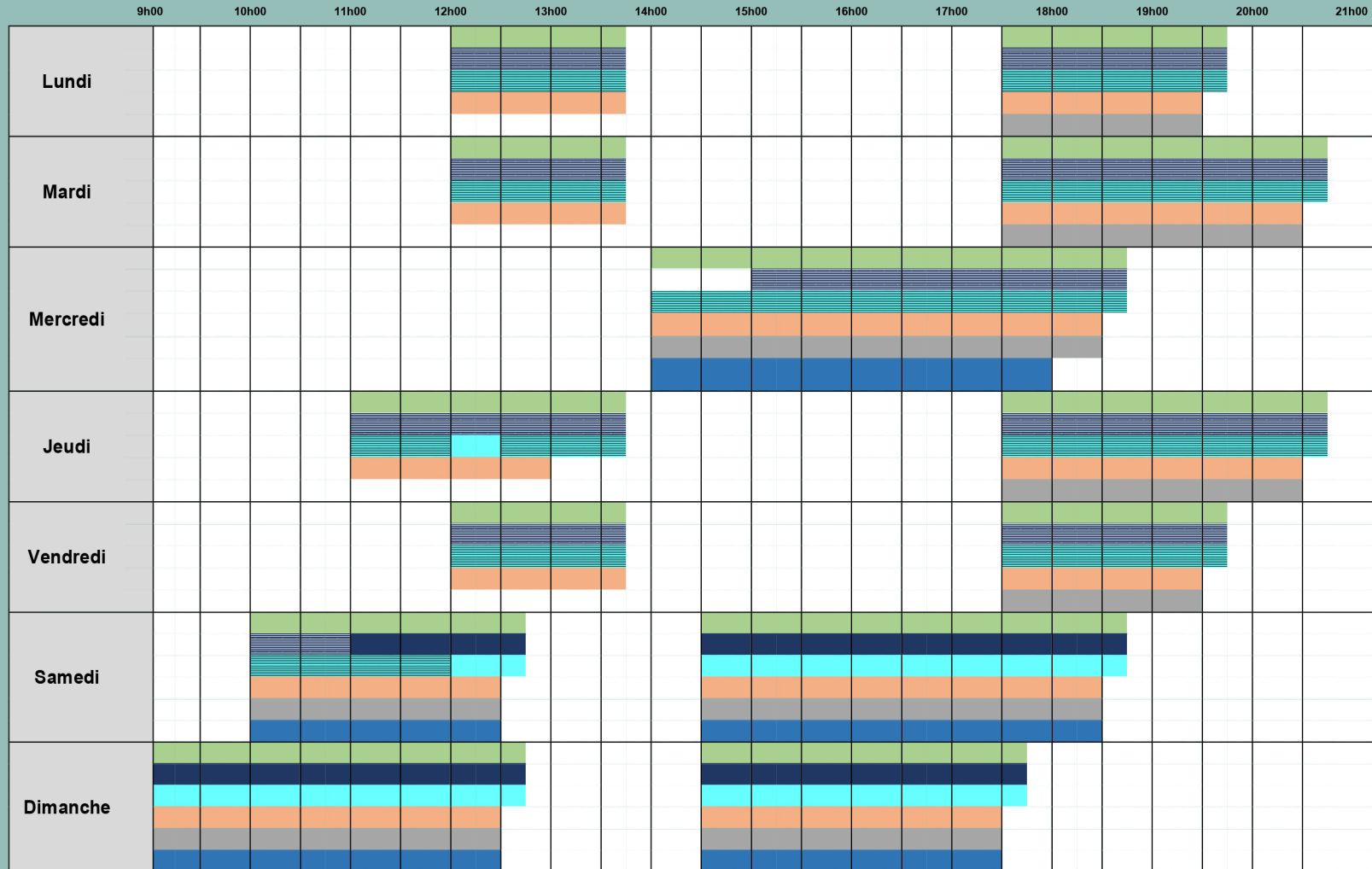
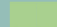









COMPLEXE AQUATIQUE - Période scolaire 2024-2025

Horaires d'ouverture - Bassins et équipements - à partir du 2 septembre 2024



-  Bassin 50m
-  Halle de nage et d'apprentissage
-  Bassin 25m uniquement
-  Halle ludique et famille
-  Bassin ludique uniquement
-  Espace bien-être
-  Toboggans Pataugeoire
-  Rivière

